

TRACEE JOHNSON



PORTFOLIO



PROFESSIONAL WORK



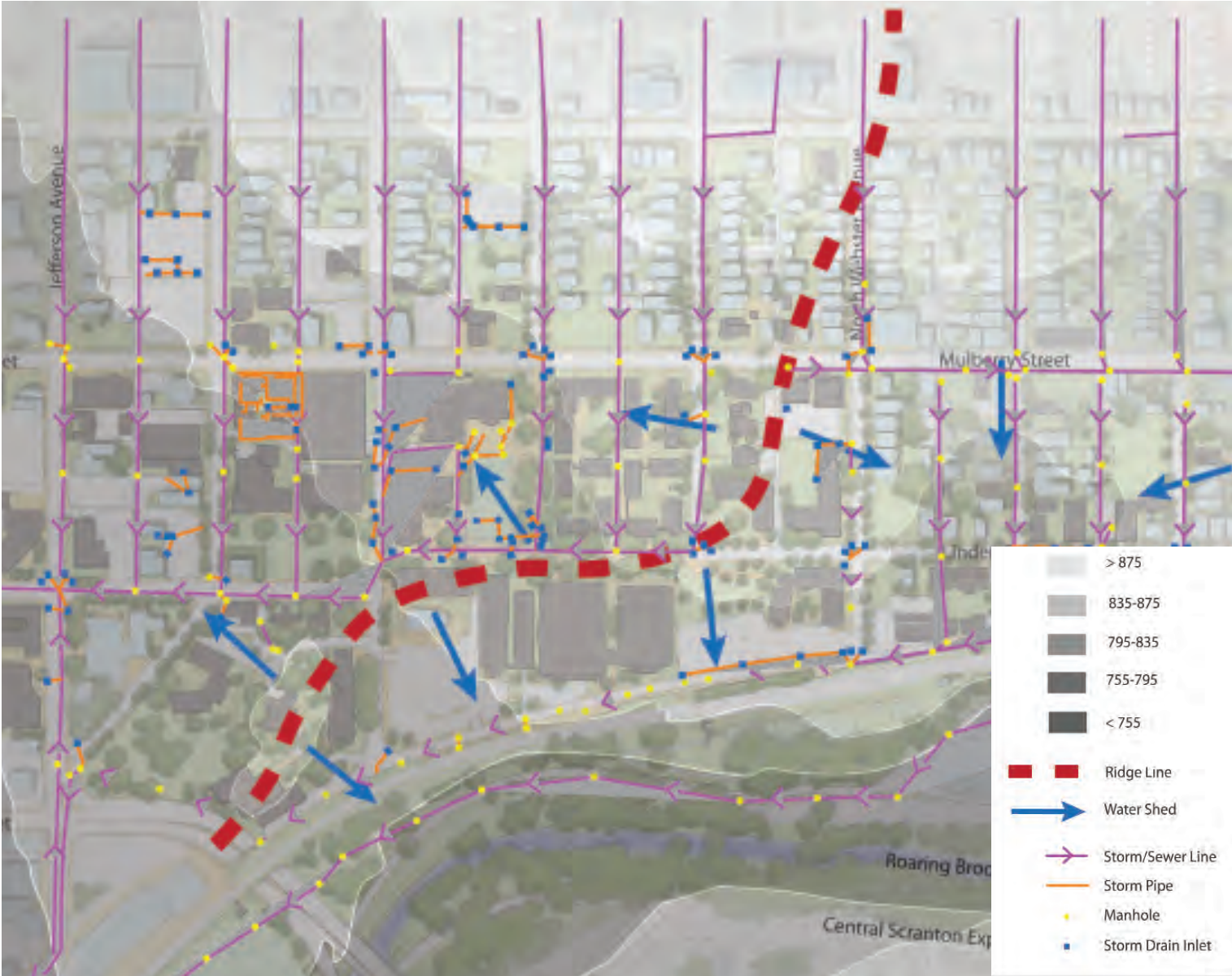
2007-2011 @ Ayers Saint Gross Architects

The University of Scranton is a compact urban campus located near the city center. A multi-disciplinary design team engaged a collaborative approach in preparing an interconnected Building and Land Use Plan, Landscape Master Plan & Design Guidelines and Construction Documents.

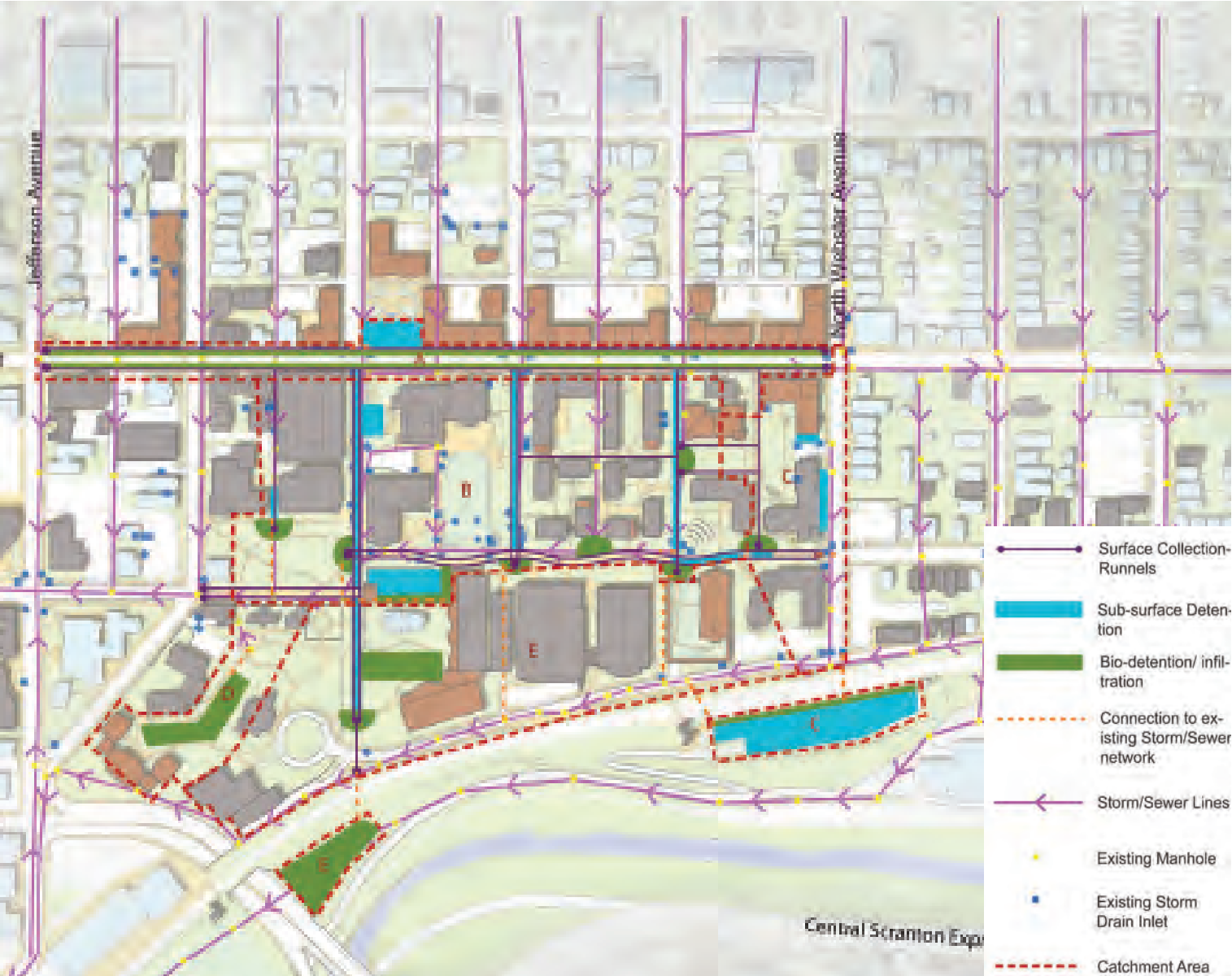
MASTER PLANNING WITH WATER IN MIND

Stormwater management was of particular importance on this site, from planning through construction. Situated on a hillside, the majority of the university's stormwater drains into the local Roaring Brook. Currently the city's combined storm sewer system is outdated, making stormwater management a necessity in maintaining the health of Roaring Brook. Converting the traditional practice of directing stormwater to sub-surface gutters and catch basins; a surface network of runnels and rain gardens provide a visible collection system for rain water.

Existing Watershed Diagram



Proposed Stormwater Management Strategy



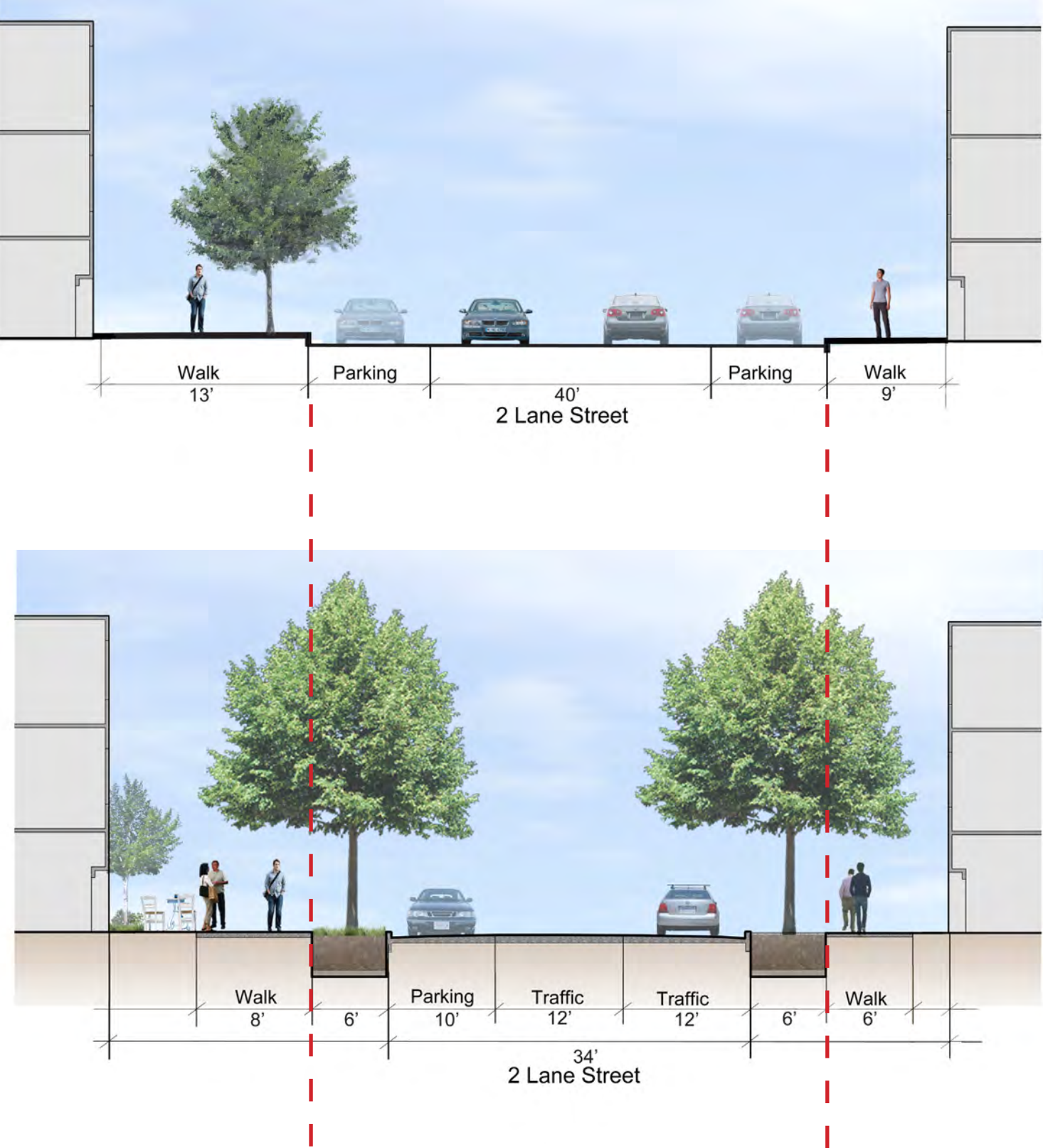
STREETSCAPE IMPROVEMENTS

Mulberry Street is the most heavily used road of both the campus and local community. It serves as the connection between campus and community. In depth analysis of the context led to the narrowing of the street, introducing wider sidewalks and additional tree canopy. Re-development focuses on pedestrian-oriented spaces and mixed use development. Seat walls and hardscape details are added to define the campus identity and provide a pedestrian sense of place. Stormwater retention areas and planting along Mulberry Street provide education and promote awareness of sustainable practices.

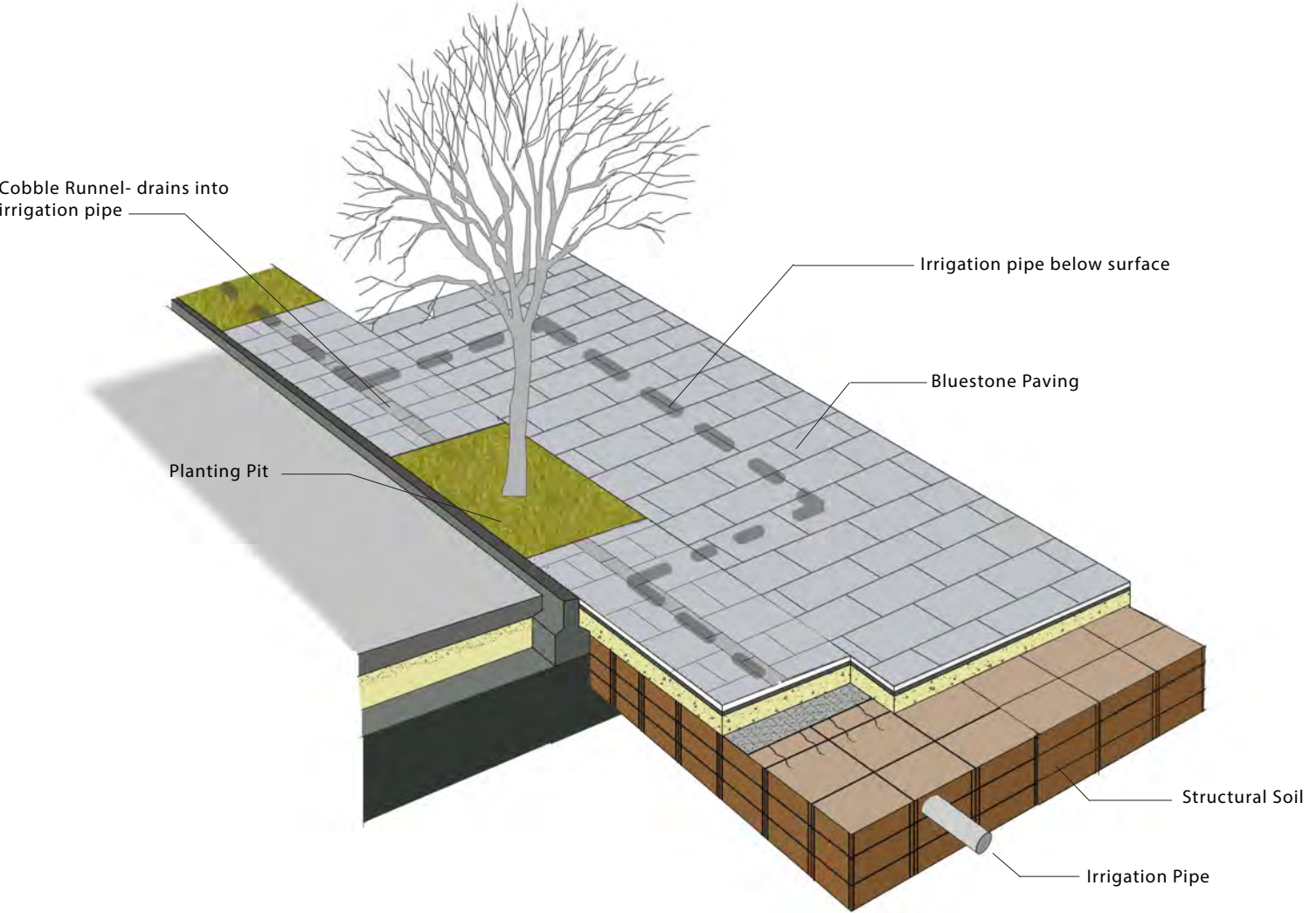


STREET HYDROLOGY

--- Existing Curb



Reducing the width of the road and allowing for additional street trees and native grasses is the first step in reduction of stormwater runoff. Additionally, stormwater is collected through cobble runnels in the sidewalk and directed into tree pits for on-site infiltration and irrigation. The cobble runnel also serves as a visual feature of sustainable stormwater practice. Structural soil is installed underneath the entire width of the sidewalk to allow for mature, healthy canopy trees.



PEDESTRIAN ORIENTED SPACE

By strategically closing vehicular roads and expanding major pedestrian routes the core of campus becomes more pedestrian friendly. Vehicular routes, such as Clay Avenue, are relocated to the campus periphery and existing streets are redesigned to a pedestrian scale. Introducing a unified palette of landscape materials and expressions creates a coherent visual identity. Entrances to the campus are better defined with custom masonry gateways and signage.

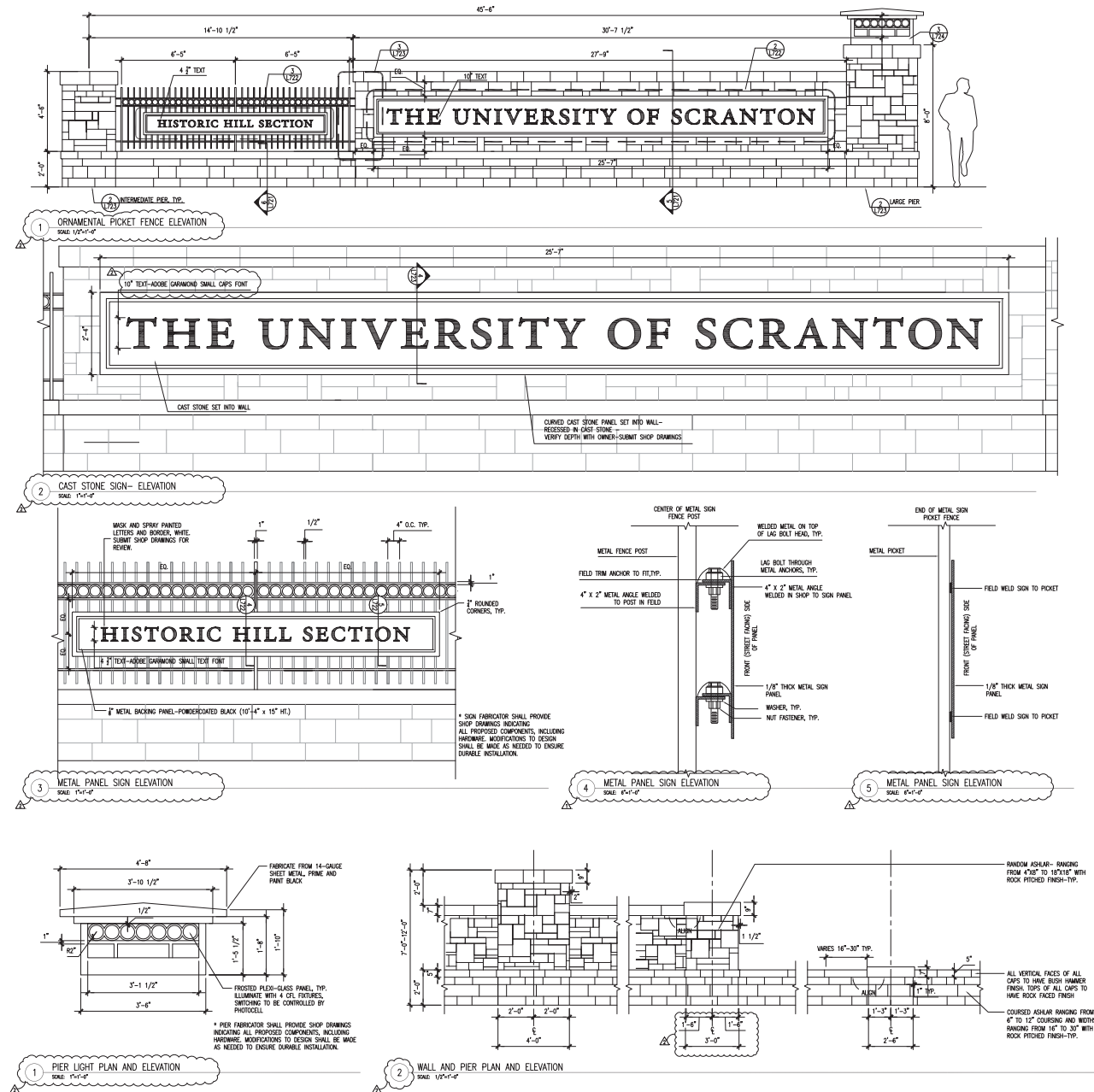
Custom Construction Details



Clay Avenue After- Pedestrian Street



Mulberry Street Entrance Sign (above) & Redeveloped Sidewalk (below)



HARBOR POINT MASTER PLAN

baltimore, md us lacrosse headquarters

ANALYSIS & PLANNING

Master Plan for a 29-acre brownfield site that will accommodate up to 3 million square feet of mixed-use development on a peninsula in downtown Baltimore’s harbor. Site strategies and massing designs meet zoning, finance and environmental constraints. The study includes development of a site for the National Lacrosse Center, including a museum and lacrosse field which will double as a public waterfront park. Planting and material concept diagrams are just a few of the studies completed in conjunction with the site massing studies.



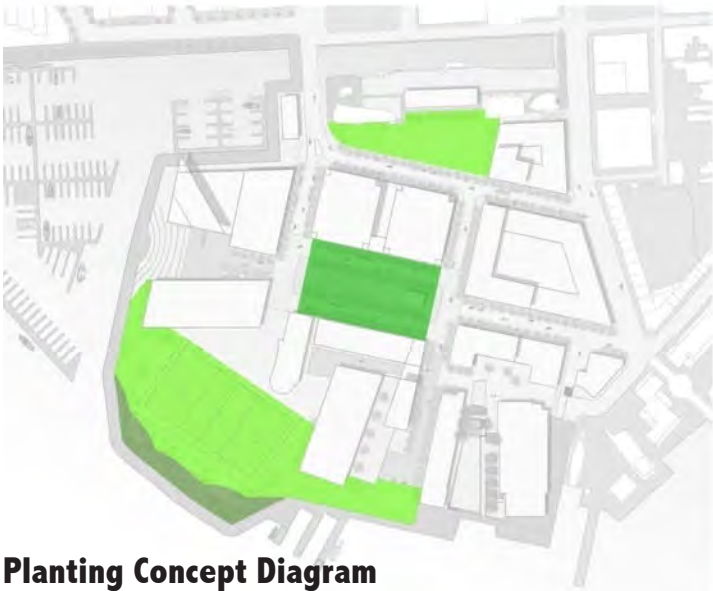
OPEN LAWN/LACROSSE FIELD



URBAN TREE PLANTINGS



STORMWATER PLANTINGS



Planting Concept Diagram



ASPHALT



BRICK PAVING (2X4)



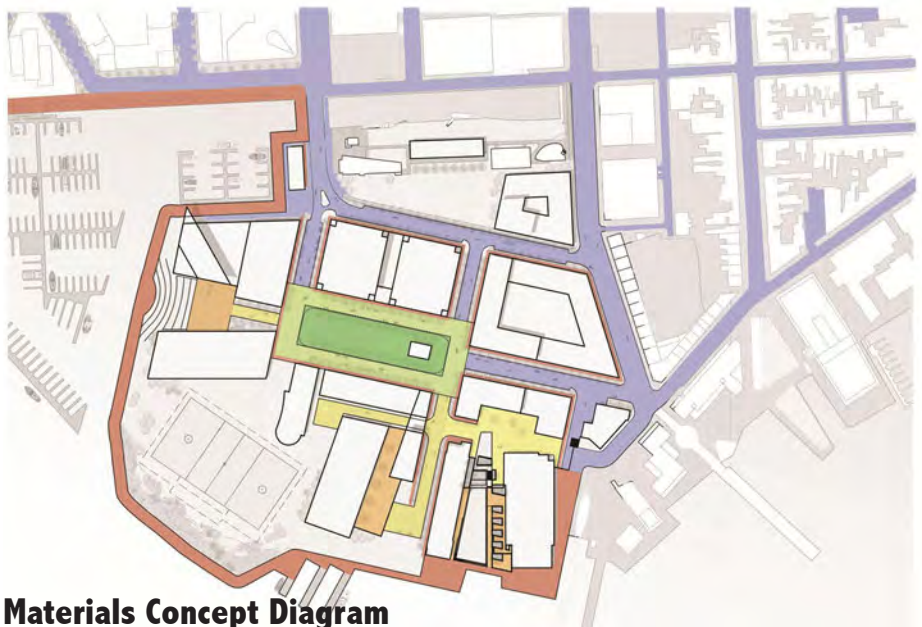
ASPHALT BLOCK PAVERS



BRICK PAVERS (2X8)



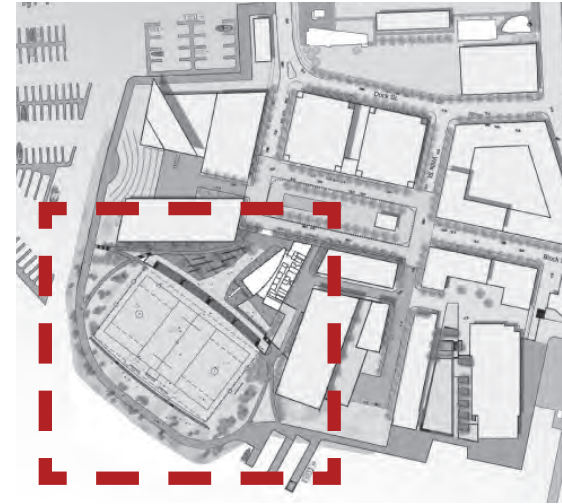
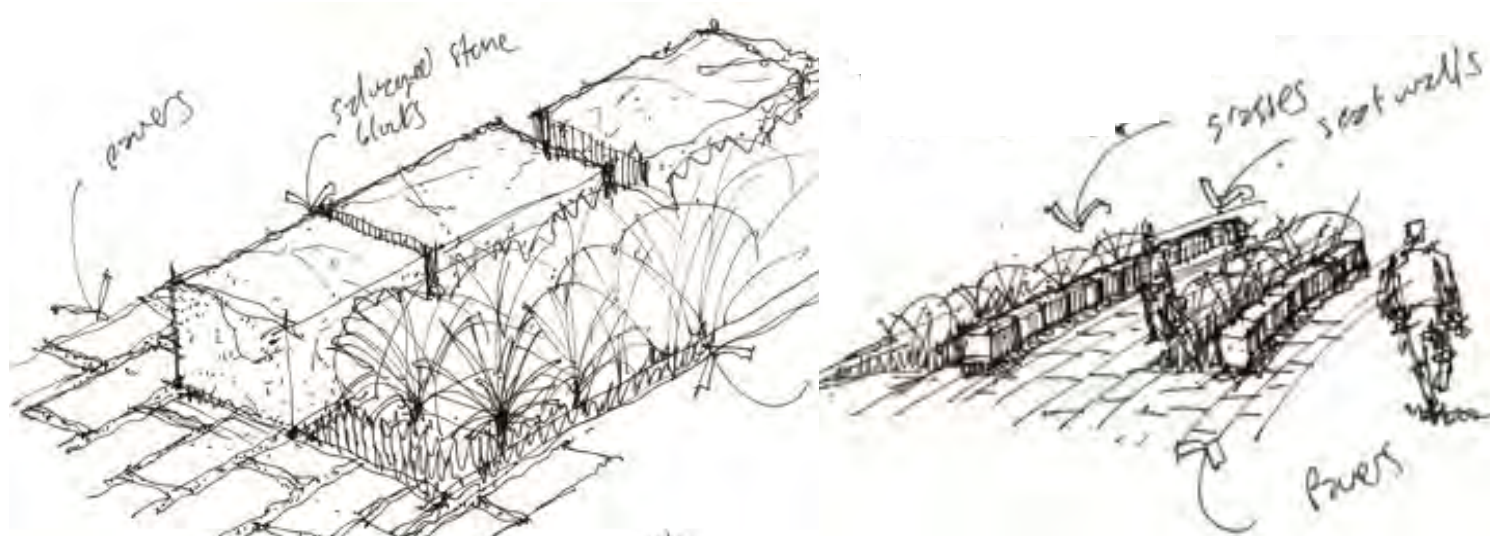
GRANITE COBBLES



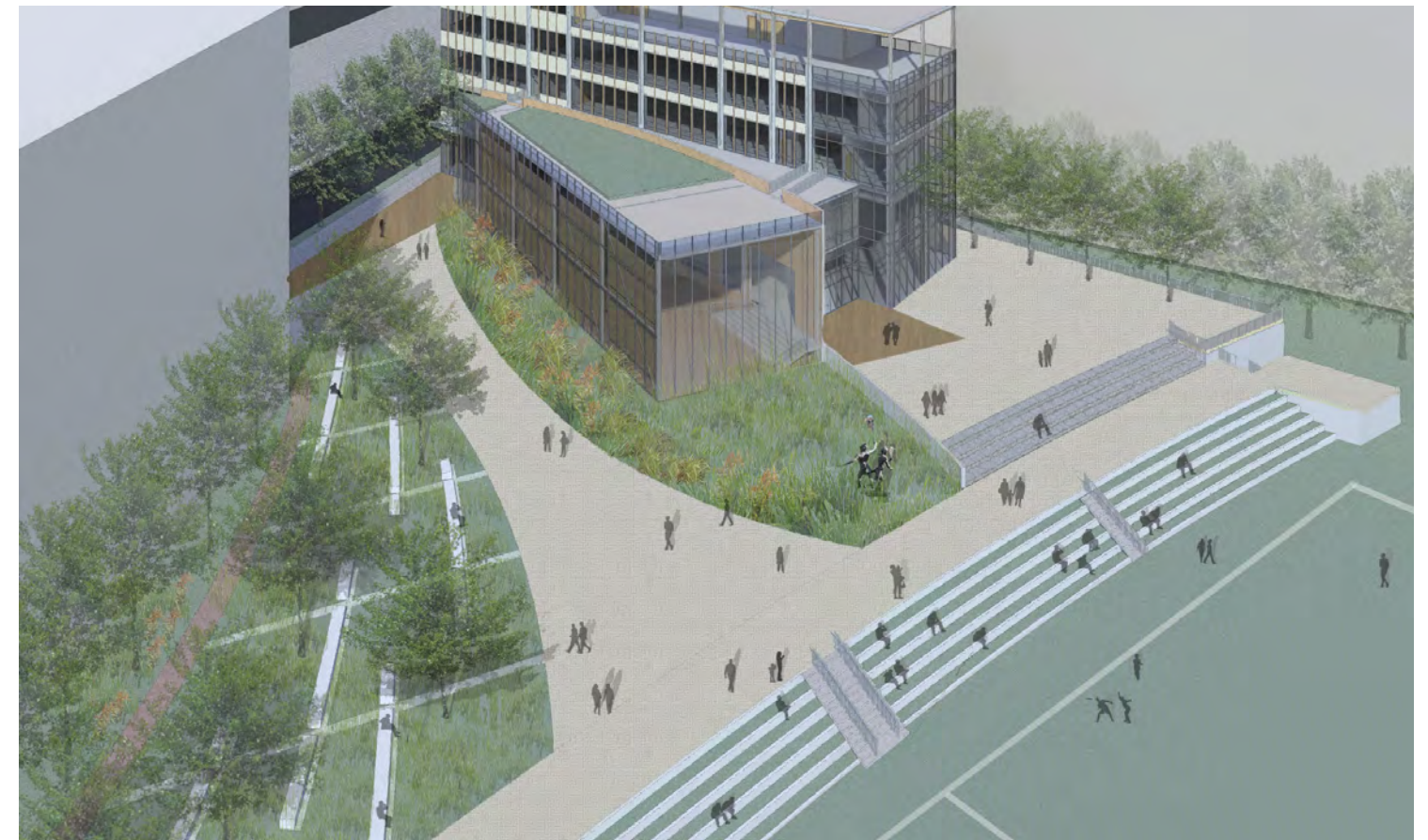
Materials Concept Diagram



CONCEPT DEVELOPMENT



The development for the relocation of the National Lacrosse Center to Baltimore includes a lacrosse field, museum plaza and public waterfront park. The primary focus of the study is the integration of the proposed building and amenities within a flexible and inviting park-like open space. Seating is integrated into the topography of the site so that waterfront views are not hindered and the public can access the open space with ease. Access into the site is provided through the proposed plaza and the Baltimore waterfront promenade, which wraps around the site. Small berms are placed at the southern portion of the site to allow for passive seating and delineation between the park and waterfront areas. Local stone and native grasses are incorporated into the plaza and seating to highlight the regional context and ecosystem. Site specific details, are proposed to define the site within the greater context of the master plan.



3-D MODELING

Three dimensional modeling and renderings were used to study the complex phasing of the new freshman hall quad at Emory University. An underground parking garage added to the complexity of the site, requiring precise landscape topography modeling. Revit was used for the modeling and Photoshop was added to convey the landscape palette.



PUBLIC PRACTICE FINE ART

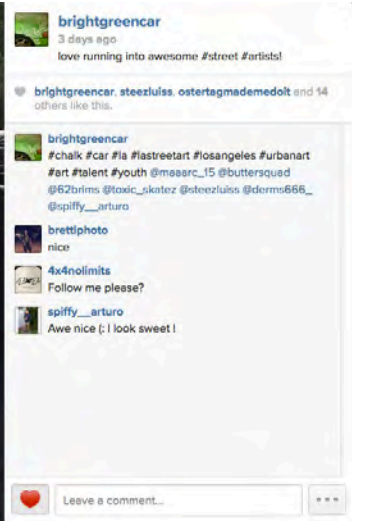
What is Public Practice Art?

Under the leadership of Suzanne Lacy--renowned artist, educator, theorist of socially engaged public art, the Otis Public Practice program prepares students to re-invent traditional ways of thinking about art making. Dedicated exclusively to providing artists with advanced skills for working in the public sphere, the program focuses on both collaborative and individual art production as tools for social change.

2012-2014 thesis work @ Otis College of Art and Design

ENGAGEMENT IN OUR STREETS

BrightGreenCar is a public sketchbook and diary traveling the streets of Los Angeles. Using chalk, the car offers an unexpected platform to re-image the role of art and greenspace in our streets. It was born from the desire to “flip” the isolation factor of automobiles and instead use cars as a tool for engagement and expression. Pedestrians are invited to draw and write on the car at anytime while a cooresponding social media account documents and shares the interactions.



GUERRILLA POCKET PARKS

Currently, I am investigating the impact of guerilla swing installations in Los Angeles street medians. Swings are installed in neighborhoods that have limited access to public greenspace. As a city that owns more acres of abandoned lots than public parks, the installations aim to highlight both the benefits and lack of active greenspace in the urban landscape. The swings act as a tool toward de-alienation, space activation and autonomy. The project continues to evolve and transform, which is a defining theme of my public work. Based on community input, user interaction and consistent critical evaluation, the installations often shift in size and/or location. The simple form and heavy use of the swings have instilled them as a valuable component in some Los Angeles neighborhoods. Some neighborhoods have even organized to have these swings reinstalled after removal by city authorities. This sense of attachment and action via playful gestures is central to my ongoing creative endeavors.



MOTION ACTIVATED SPACE



A gallery translation of my on-site swing interventions took the form of a motion activated video and sound installation. A replica of a site swing was installed along with projections of the power-lines that cover the street medians. When audience members used the swing, their motion activated audio recordings from site visits at the guerilla parks. As the swing moved, users were able to hear edited conversations with residents from this south los angeles neighborhood. The conversations reflected a range of topics including greenspace equality, local gangs, race relationships and the impact of the swings. The activation of the audio via motion represents the playful character of the installation as well as the need for action to impact change in our landscapes.

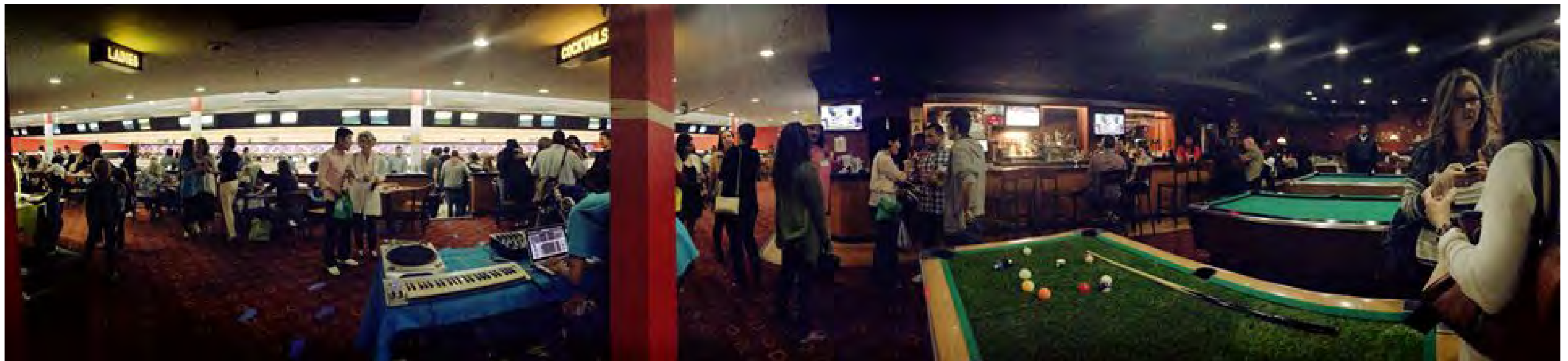
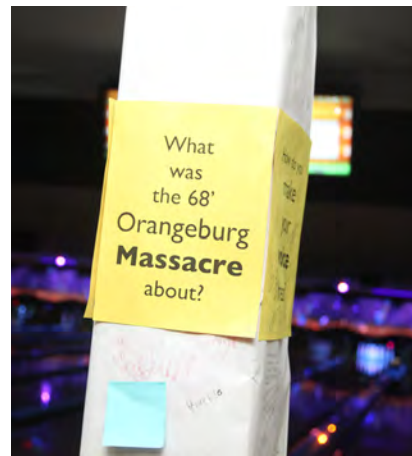


ART ENTERS A BOWLING ALLEY

What happens when an art exhibition leaves traditional art space for a bowling alley?

The 2014 Graduate Public Practice MFA Exhibition was held at the AMF El Dorado Lanes bowling alley, across the street from Otis campus. The works in the exhibition covered a wide range of media and topics, but share the common denominator of envisioning an art practice that reaches outside of the gallery and into a community or public space where it may achieve positive social effect. The alley was transformed for two nights into an art gallery that welcomed a diverse range of guests while prompting query about “stepping out” of conventional roles.

My installation ‘Inside/Out Pool’ (right) engaged users in reimagining their position inside and outside of the space. Artificial turf and a video installation were used to disorient users sense of place while also highlighting the outdoor origins of billiards.



ET CETERA





IMMERSIVE LEARNING

Sustainable Futures is an interdisciplinary program in architecture, landscape architecture and planning involving five university partners and the Monteverde Institute. The ten week course offers senior and graduate students the opportunity to live and work in a rural, but rapidly developing region in the Monteverde Cloud Forest of Costa Rica. This is a “service learning” engagement where studio work is focused on community-identified projects that help envision and create futures that are ecologically and socially just. Since the program’s inception in 1995, the Sustainable Futures program has contributed to planning, design, and construction throughout the area. Sustainable Futures uses practice as a learning approach, and introduces intervention theory as the organizing perspective: how to organize to do work and how to engage a diverse and complex community in place-making. The work focuses on generating responses to the community requests to generate a public dialogue. A design/planning studio forms the backbone of the program, and uses methods of small group interactions, team design/build work, individual critiques and public reviews. Students participate in a seminar on sustainable development, enroll in Spanish language classes, and take an intensive studio with one of the many organizations in the Monteverde zone working toward sustainability.



THE FUNDAMENTALS

This sophomore design studio is an introduction to the technical, analytical, and perceptual skills used in the production and representation of landscape architecture. Lectures, site visits and problem-solving assignments are used to develop technical and analytical skills. Students learn about the many phenomenal components of landscape design that work together to create perceptual and sensorial experiences. Assignments investigate construction systems, materials, topography, plants, water management and natural systems as essential components of landscape design. Hands-on experimentation, hand-drafting and 3D models are some of the techniques students develop to express their design concepts.



NATIONAL PARK(ING) DAY

baltimore, maryland temporary installation

NEWS

Trash Recycled From Harbor Used For Temporary Fells Point Park

September 16, 2011 8:34 PM

Share this  Like 68  Tweet 6  +1 0  Share 14  4 comments



BALTIMORE (WJZ)—If you were in Fells Point on Friday you probably noticed something unusual: landscapers and architects working to change the look of a simple parking space.

Ron Matz has more on a patch of green on Broadway.

On National Parking Day, a parking space in Fells Point is being turned into an urban oasis.





TRACEE JOHNSON

www.traceejohnson.com

traceej1@gmail.com

315.247.1233

EDUCATION:

2014 MFA Graduate Public Practice, Otis College of Art and Design, Los Angeles
2007 Bachelors of Landscape Architecture, University of Maryland, College Park
Citation: College Park Scholars – Environmental Studies

PROFESSIONAL:

2014 Graduate Teaching Fellowship, Graduate Public Practice, Otis College of Art & Design
2013 – present Lecturer, Technologies & Ecologies I, Otis College of Art & Design, Los Angeles
2012 – 2013 Adjunct Professor, Sustainable Futures Design Studio, Monteverde, Costa Rica
2011 Adjunct Professor, Introduction to Drawing, University of Maryland.
2007 – 2011 Landscape Designer, Ayer Saint Gross Architects. www.asg-architects.com

ACADEMIC ASSISTANTSHIP:

2012 – 2013 Teaching Assistant, Integrated Learning, Otis College of Art and Design
2006 – 2007 Teaching Assistant, Junior & Sophomore Design Studio, University of Maryland

INTERNSHIPS:

2012 Mary Miss Studio, Broadway 1000 Steps Project
2011 Cao/Perrot Studio, Dumbarton Oaks Installation. Spring 2011
2006 Sustainable Futures Internship Abroad, Monteverde, Costa Rica

AWARDS/HONORS:

2014 Otis Board of Governors Fellowship recipient
2013 Residency, MKE <->LAX Artist Residency, Boyle Heights, Los Angeles
2007 Student Honor Award: American Society of Landscape Architects
2003 National Vision & American Vision Award, New York State Scholastic Art Awards

EXHIBITIONS:

2014 Group Exhibition. *Stepping Out*. MFA Thesis Exhibition, El Dorado Lanes, Los Angeles
2013 Group Exhibition. *Happy Birthday Recovery*. Performance with the Los Angeles Poverty Department, Skid Row, Los Angeles
2013 Group Exhibition. *Around the Clock: 24 Hour Donut City*, ForYourArt, Los Angeles

PUBLIC WORKS:

2013 – ongoing Solo. *Right to Play*, Guerilla Swing Installations, street art, Los Angeles
2013 – ongoing Solo. *BrightGreenCar*, traveling chalkboard car, street art, Los Angeles
2012 Los Angeles Poverty Department Archive: 1984 – 2012, image archive for display, The Last Bookstore, Los Angeles

2010 – 2014 Group Work. *National Park(ing) Day Installations*, annual greenspace street intervention, Los Angeles and Baltimore

PROFESSIONAL ORGANIZATIONS:

2007 – 2012 Maryland American Society of Landscape Architects, Member at Large & Website Chair
2011 Art with a Heart, Volunteer art teacher, St. Paul’s Place, Baltimore, MD

SKILLS/INTERESTS:

Adobe: Photoshop, Illustrator, InDesign, Premiere & Audition.
AutoCAD, ArcGIS, SketchUp, Revit, Microsoft Office & website development.
Socially engaged art, digital photography, glass blowing, hand drafting, acrylic, encaustic & oil painting.
Travel abroad.

References available upon request.

